

Google Home

Setting up Google Wi-Fi with Google Home App

Setting up Google Wi-Fi with Google Home App

I. Android

1. Open **Google Home** and click “**Get Started**”.

Welcome home
Your content and devices all in one place



Get started

2. Click “**Use another account**” to create a google account.

Choose account

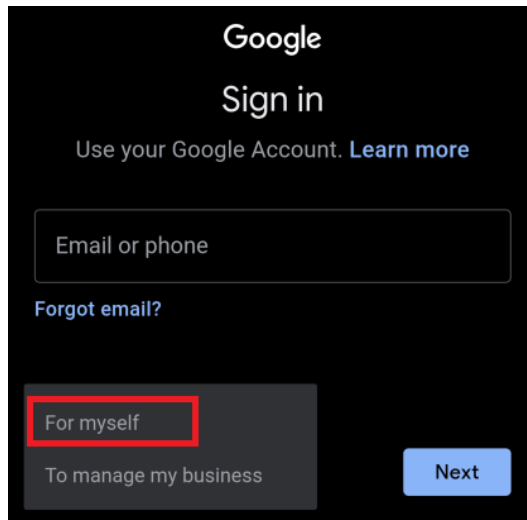
Use this account with the Google Home app

Use another account

Your use of Google services and devices, including this app, are covered by the Google [Terms of Service](#) and [Privacy Policy](#).

OK

3. Click **“For myself”** and **“Next”** to continue.



Google
Sign in
Use your Google Account. [Learn more](#)

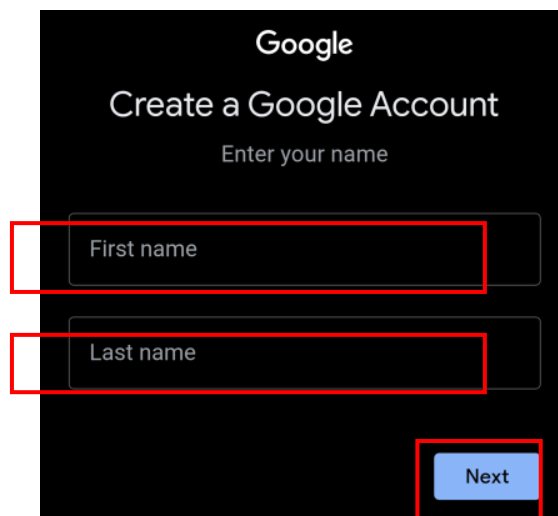
Email or phone

[Forgot email?](#)

For myself
 To manage my business

Next

4. Enter your **first name** and **last name** and click **“Next”**.



Google
Create a Google Account
Enter your name

First name

Last name

Next

5. Enter your **birthday** and **gender** and click “**Next**”.

Google
Basic information
Enter your birthday and gender

Day Month Year

Gender

Next

6. Pick a **Gmail Address** and set up the **password** for the account.

Google
Choose your Gmail address
Pick a Gmail address or create your own

uuuhkt@gmail.com

hktuuu0@gmail.com

Create your own Gmail address

Create a Gmail address @gmail.com

Next

7. After creating the account, click “**Next**” to allow location access for detecting your Wi-Fi network.

Location access

Location access is needed to detect nearby Wi-Fi and Bluetooth signals to determine your location during your home and device setup process



[Help](#)

[Next](#)

8. Click “**Turn on**” to turn on Bluetooth and improve the connection to your Wi-Fi network.

Turn on Bluetooth

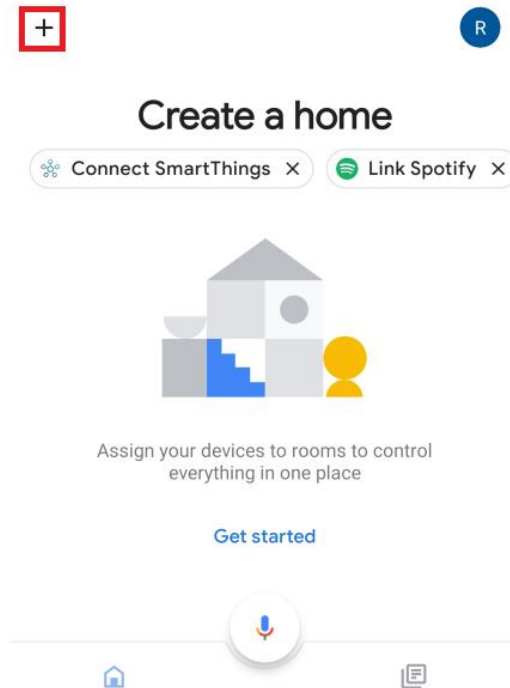
Bluetooth access is needed to improve the connection to your device, determine your location during setup and discover and set up nearby devices. You can turn it back off when you've finished with setup.



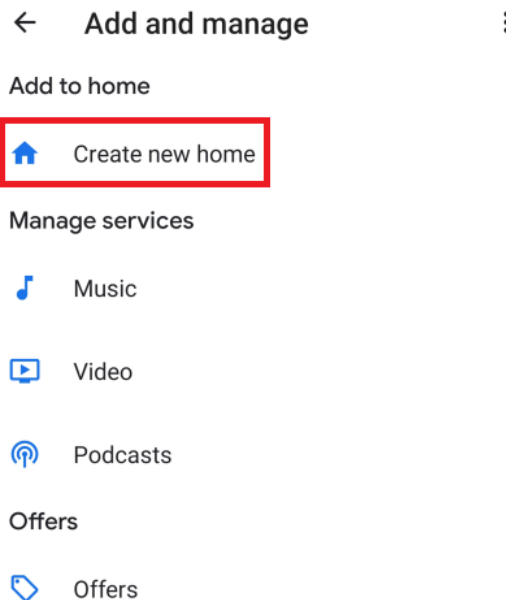
[Cancel](#)

[Turn on](#)

9. After entering the home page, click the “+” sign at the top left hand corner.



10. Select “Create new home”.



11. Name your home and click “Continue”.

Name your home

Choose a nickname for this home to help identify it later.

Home nickname
Hkt google

Continue

12. You will be asked to fill in home address information.
You can choose to skip it by clicking “Skip”.

< Home address ⓘ

🇭🇰 Hong Kong (HK) ▾

Address line 1

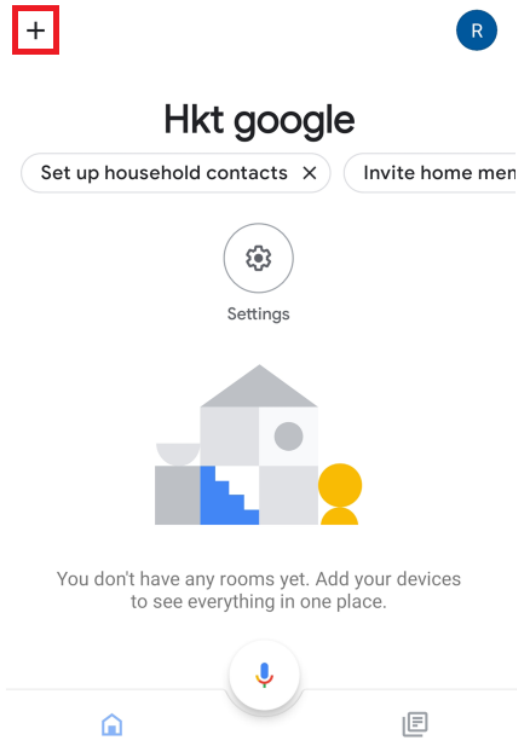
Address line 2

District ▾

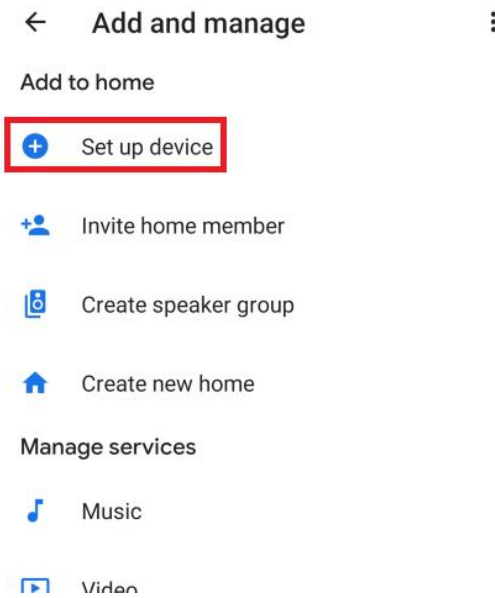
Area ▾

Skip Next

13. Make sure that **the router** has been turned on and **connected to the Ethernet**. Then click the “+” sign at the top left hand corner.



14. Select “**Set up device**”.



15. Select **“New device”**.

Set up a device

Set up a new device or add an existing device or service to your home

New device



Add something new, like a Chromecast, Google Nest speaker or display or a partner device, including those labelled 'Seamless Setup with the Google Home App'.

Works with Google



Link one of your existing devices or services, such as connected light bulbs or plugs.

16. Select the home you just created and click **“Next”**.

Choose a home

You will be able to control the devices and services in this home



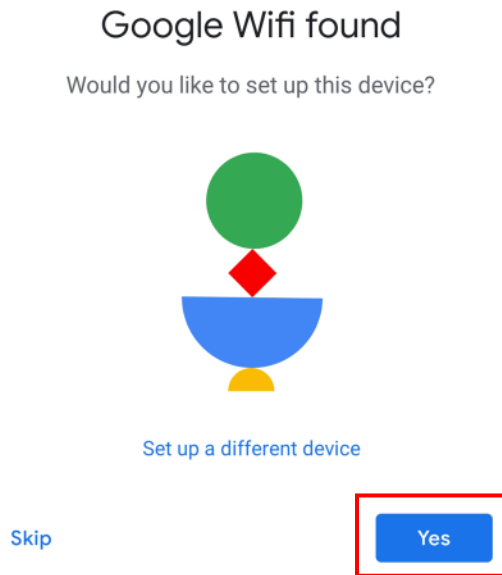
Hkt google



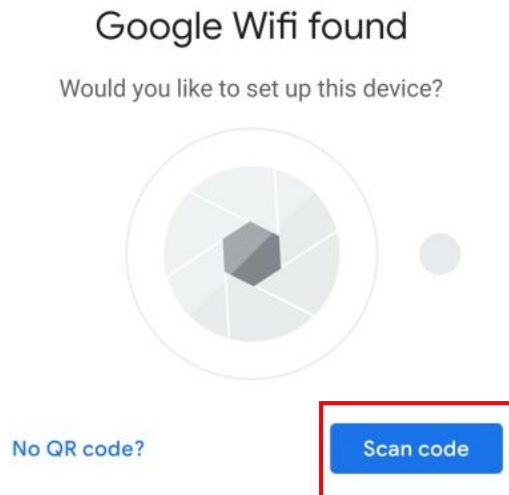
Add another home

Next

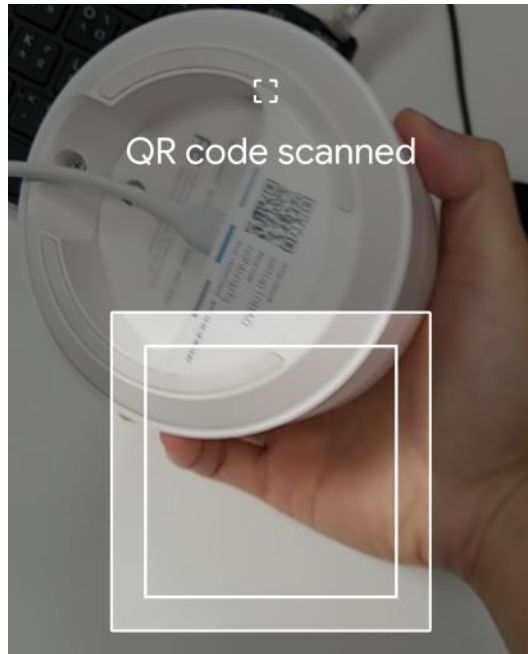
17. Click “Yes”.



18. Click “Scan code”.



19. **Scan the QR code** at the bottom of the router.



20. Wait until the router is connected to the app.

Connected



21. **Select the location** where the router is installed at.

Where is this device?

Choose a location for your Nest Wifi router.
This will help organise your devices.

Create new

Back garden

Bathroom

✓ Bedroom

Next

22. **Create a name** for the Wi-Fi.

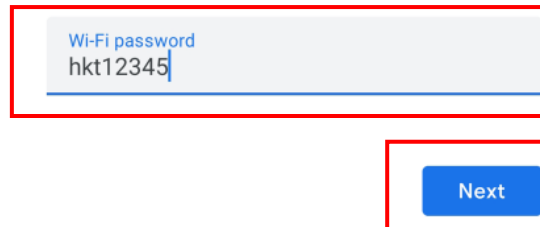
Create a Wi-Fi name

Wi-Fi name
Hkt google wifi

Next

23. Create a password for the Wi-Fi.

Create a Wi-Fi password



Wi-Fi password
hkt12345

Next

24. Click “No, thanks”.

Turn on Wifi router and point usage stats?

Automatically send anonymous Wi-Fi feature-related usage statistics and crash reports from all Wifi devices in your Wi-Fi network to Google in order to improve Google's Wifi products. This setting applies as you add or remove Wifi devices to this network. [Learn more](#)

You can turn this off at any time in your network settings.



No thanks

Yes, I'm in

25. Click **“Yes, I’m in”**.

Turn on Nest Wifi cloud services?

Cloud services and your privacy

Nest Wifi can store and analyse data about your entire network and devices (including your router) to provide peak performance, useful network insights and help when you need it. [Learn more](#)

Please note that by not turning on cloud services, some features like the following may not work as optimally:

- Family Wi-Fi
- Guest network
- Advanced networking
- Device list

This setting applies as you add or remove Wi-Fi devices to this network. You can turn this off at any time in your network settings.

No thanks

Yes, I'm in

26. Click **“Yes”** if you want to set up another router.
If not, click **“Not now”**.

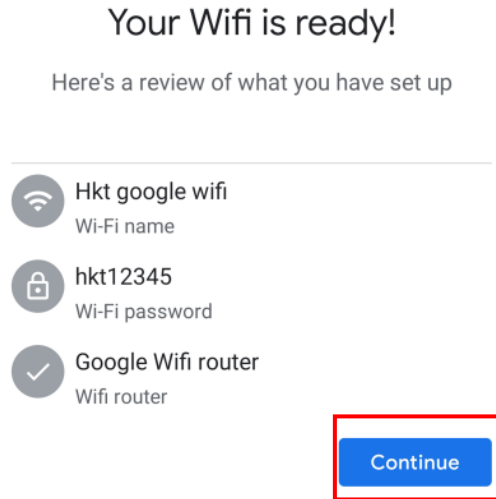
Want to set up another Wifi device?



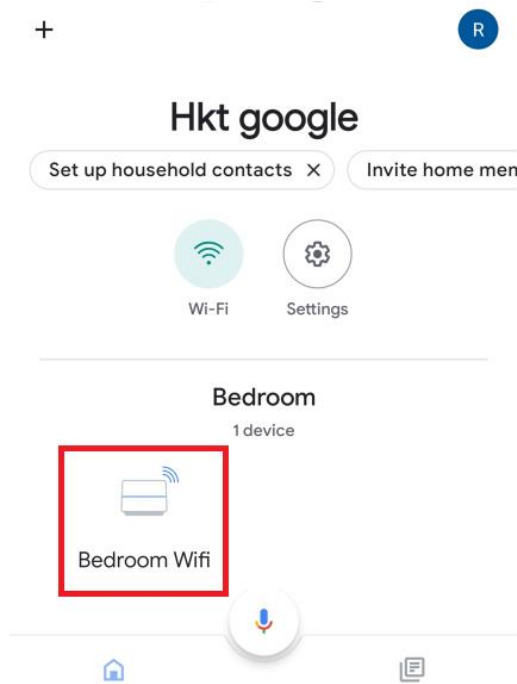
Yes

Not now

27. Click “Continue” to complete the setup.

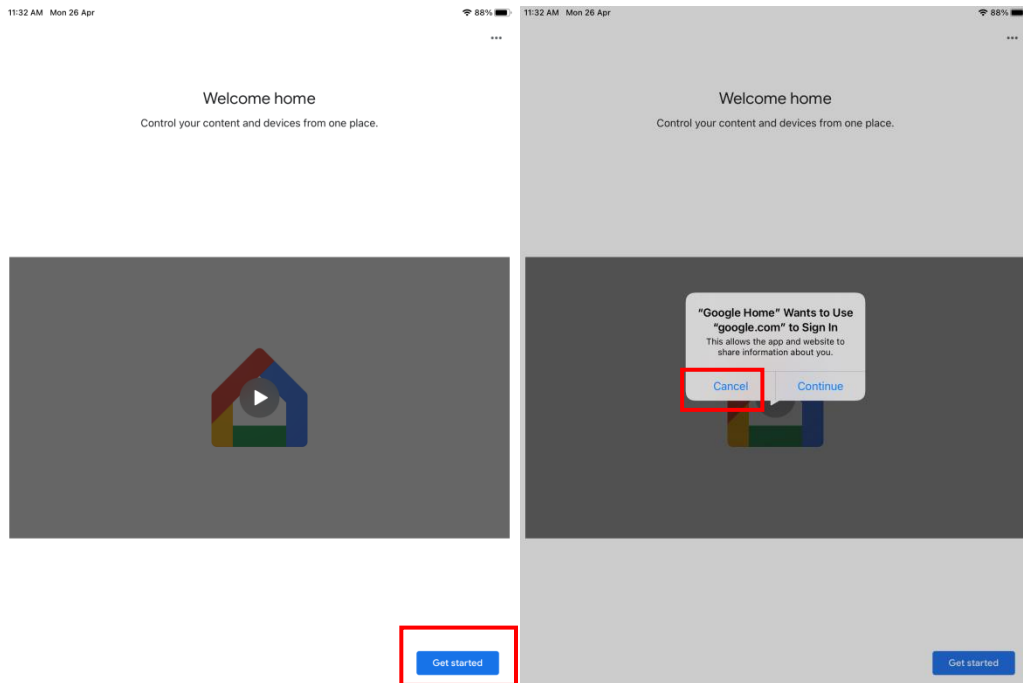


28. The router will be shown in home page after the setup.

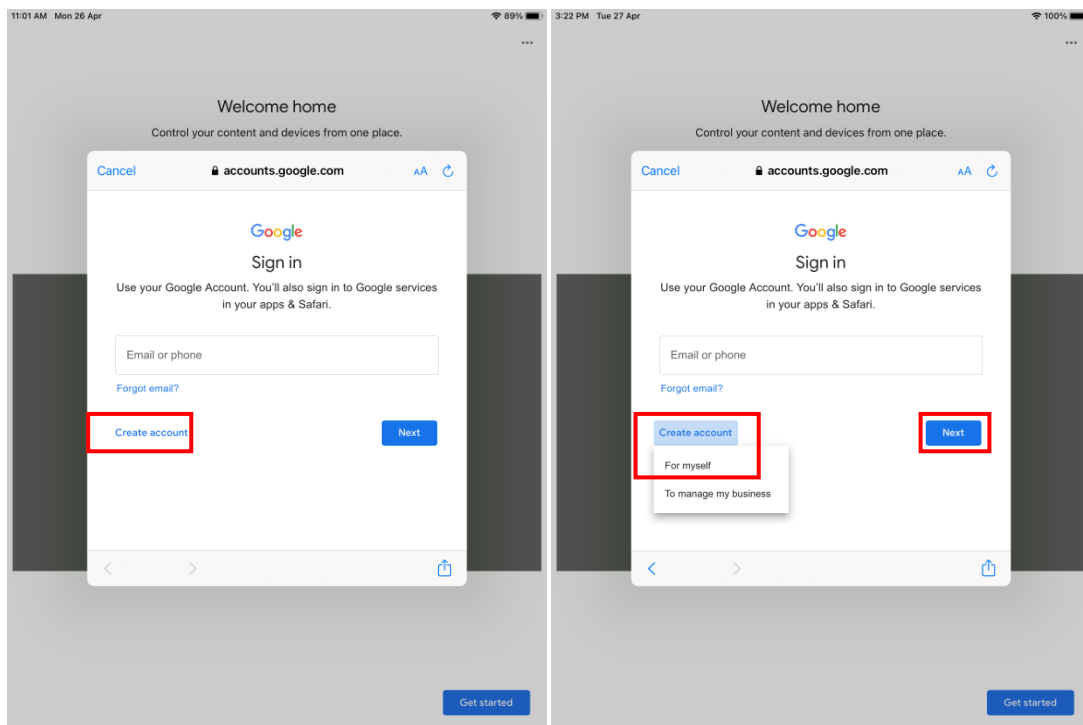


II. IOS

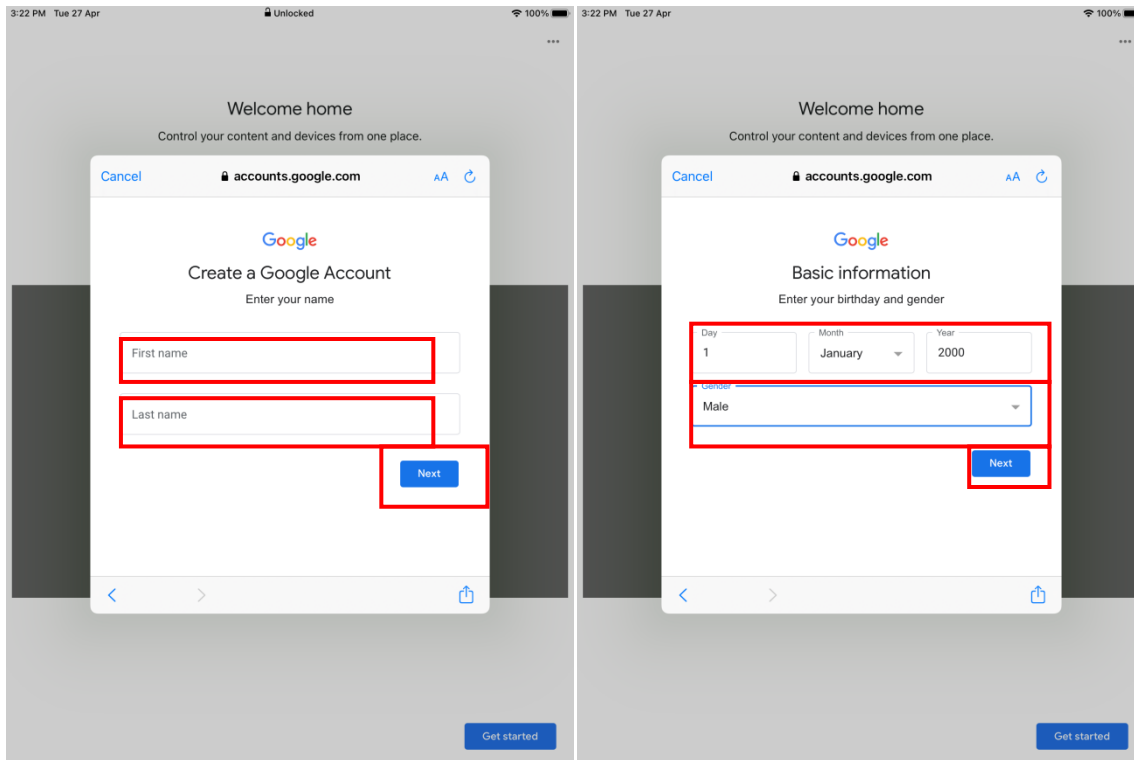
1. Open **Google Home** and click **“Get Started”** & **“Continue”**.



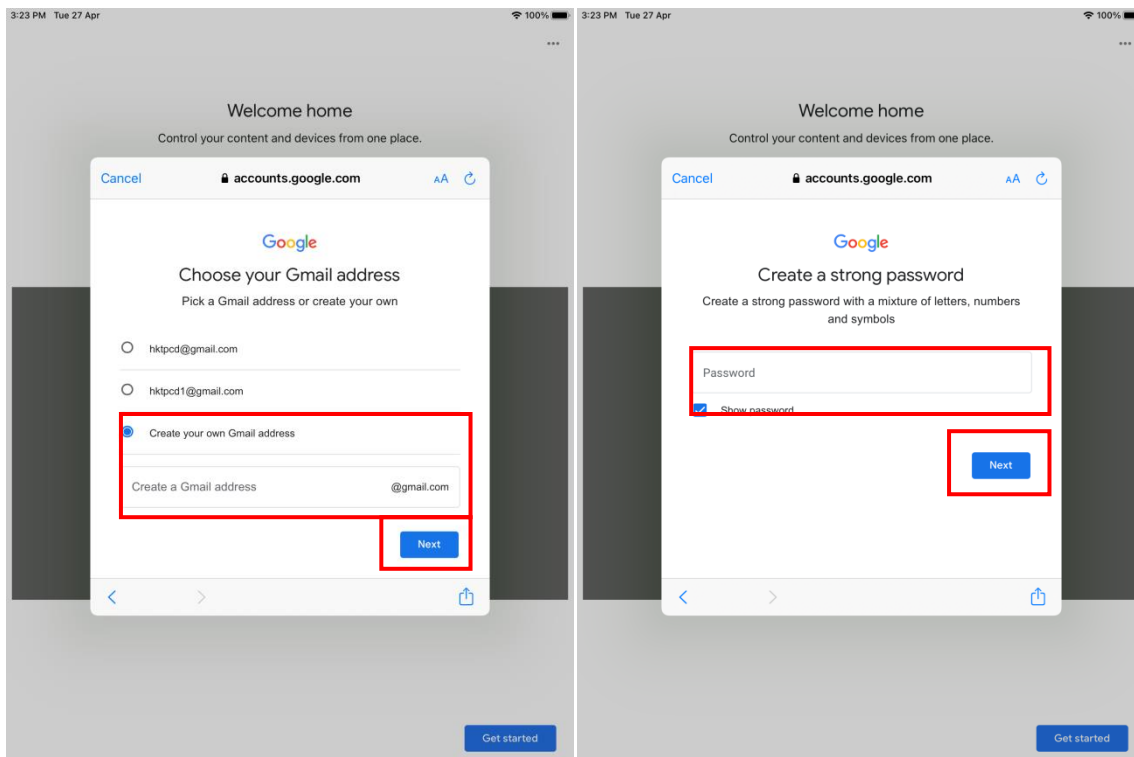
2. Choose a **“Create Account”**, **“For myself”** & **“Next”** to create account.



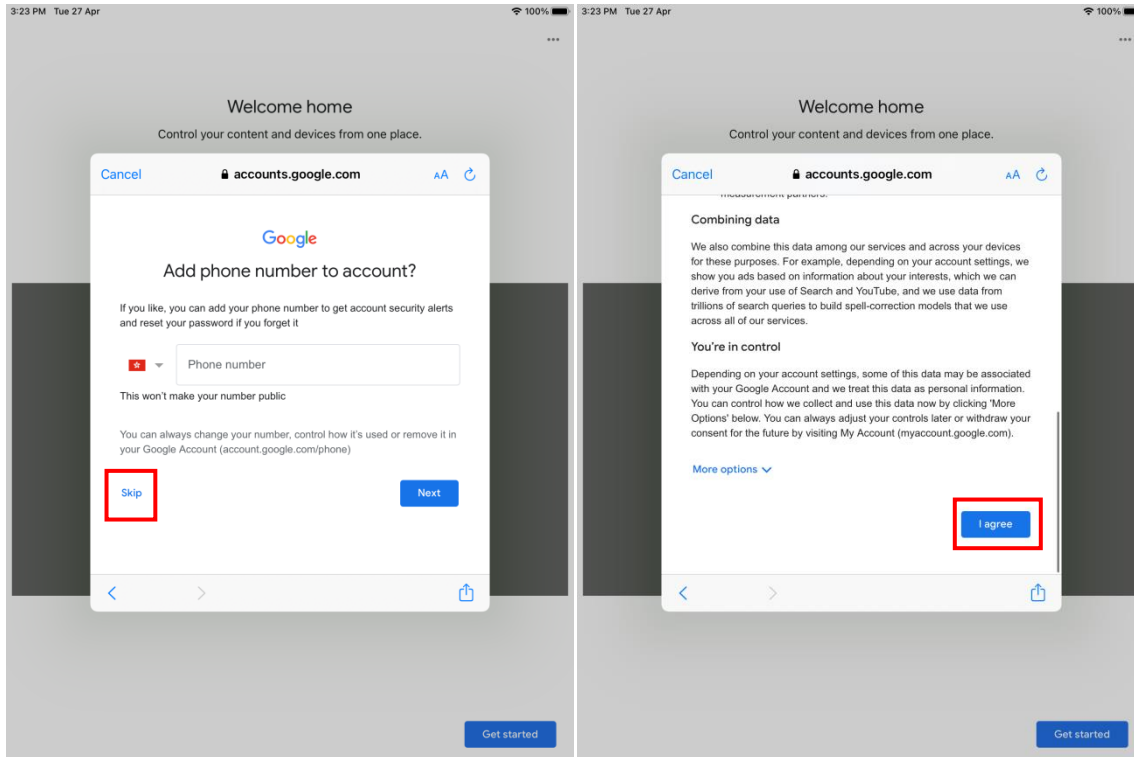
3. Input the “First name” & “last name” and “Birthday” &”Gender” and click “Next”



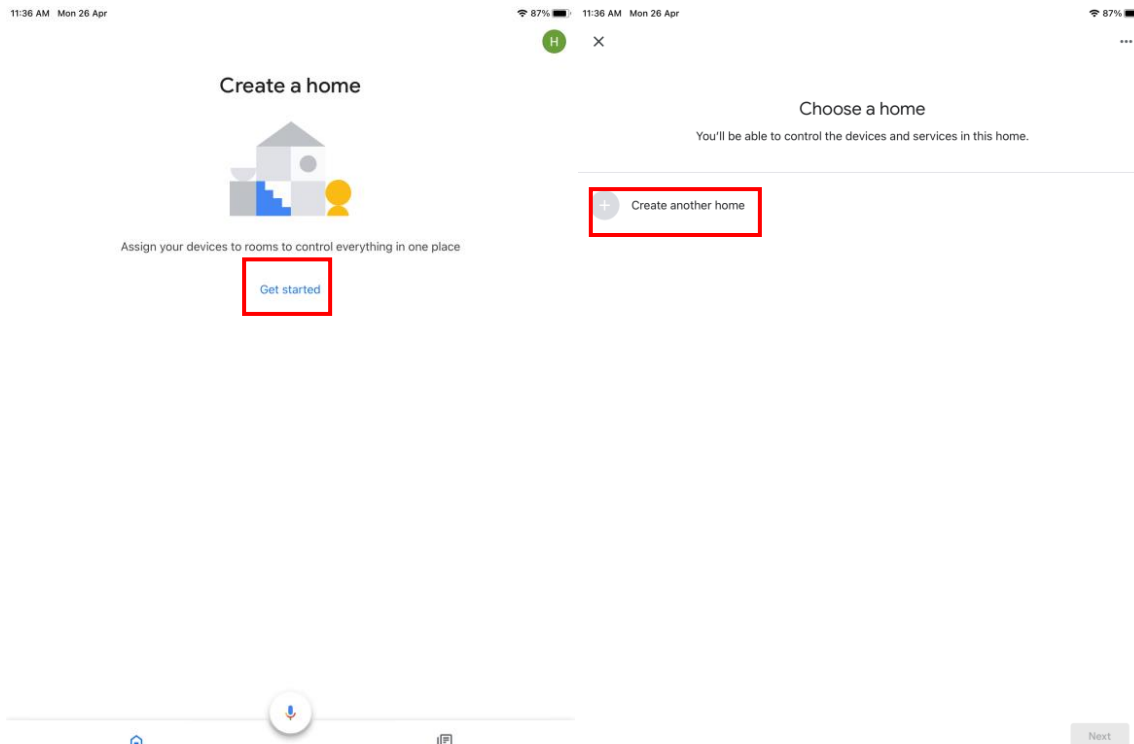
4. Select your “email address” and “password” then click” Next”



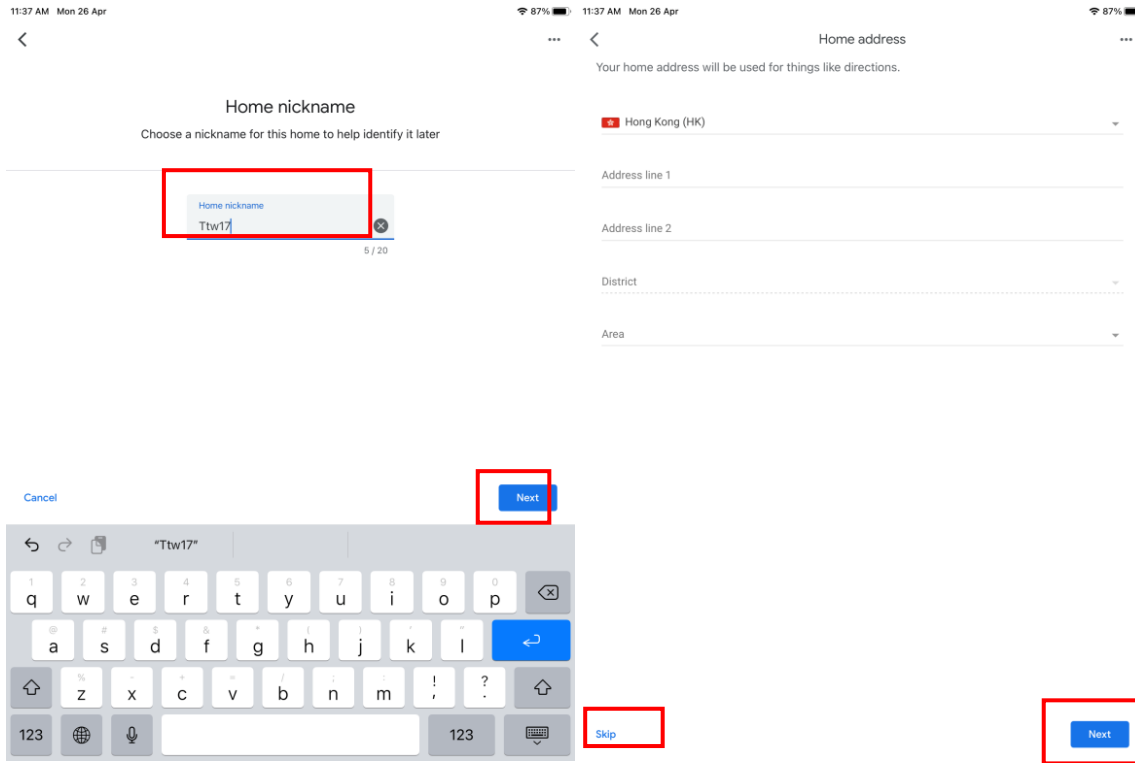
5. Click “Skip” on input phone number & click “I agree” to confirm agree Google terms



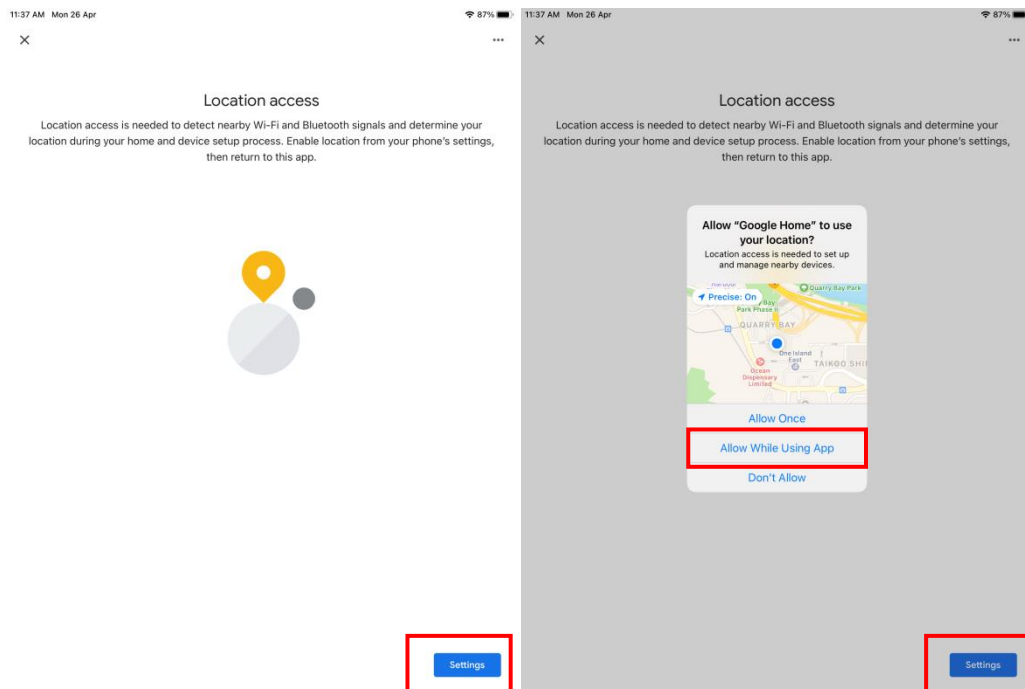
6. Click “Get Started” & “Create another Home”



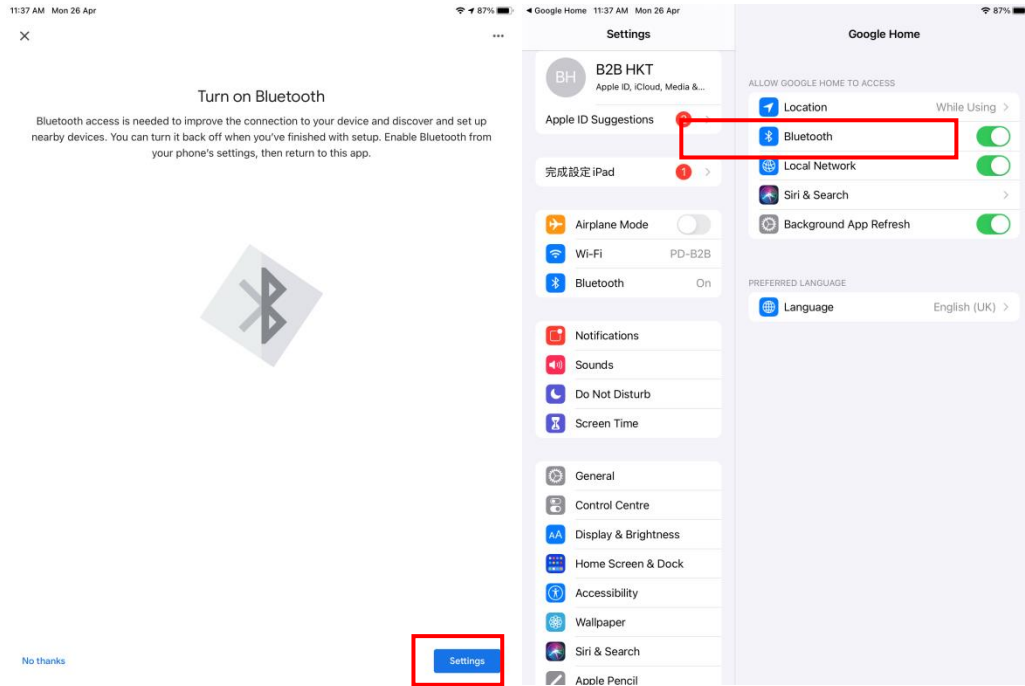
7. Input the “Network Name” & click “skip” input the address and press “Next”



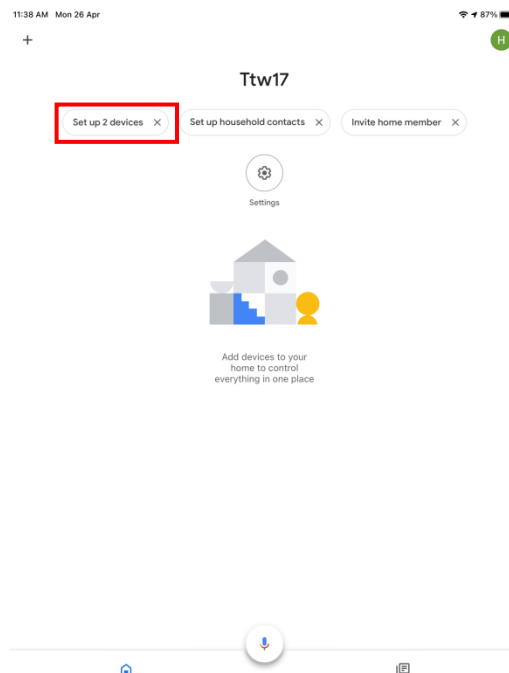
8. Click “Settings” & ”Allow while using Apps” to allow location access for detecting your Wi-Fi network.



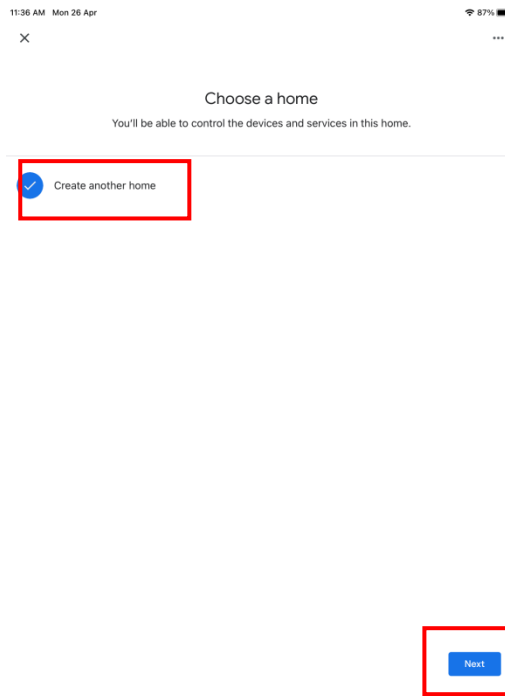
9. Click **“Settings”** and **“turn on”** to turn on Bluetooth and improve the connection to your Wi-Fi network.



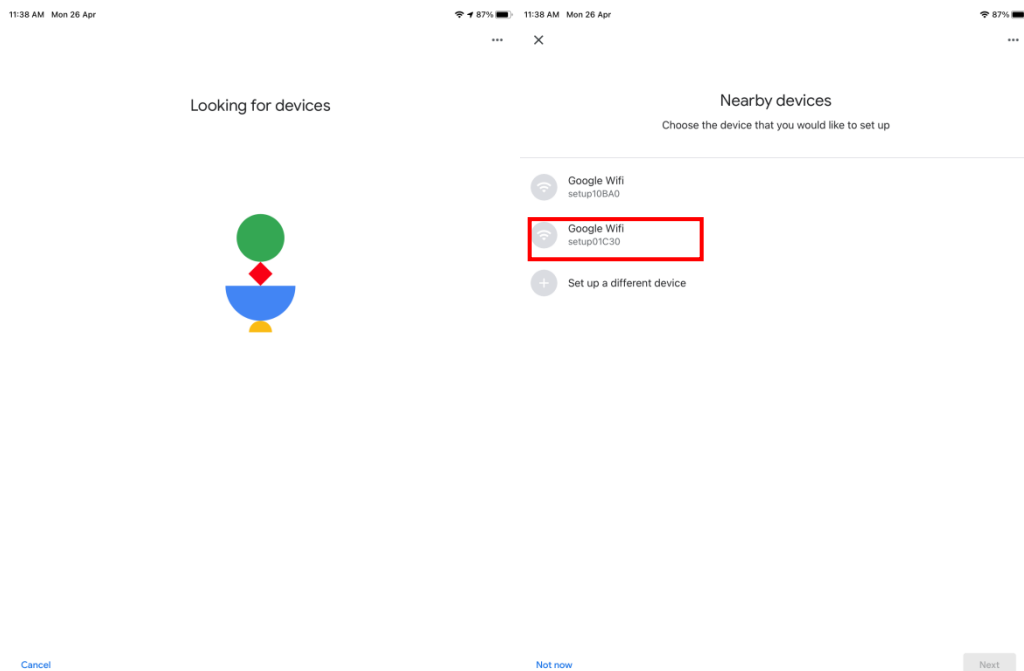
10. After entering the home page, click the **“setup 2 devices”** sign at the top.



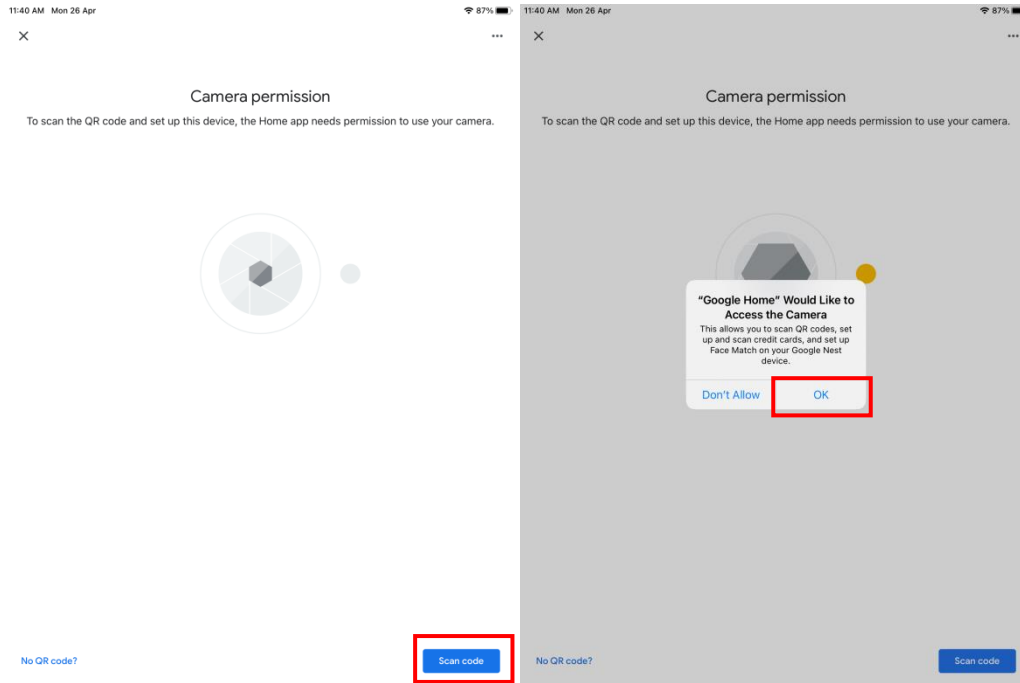
11. Select “Create new home” and “Next”.



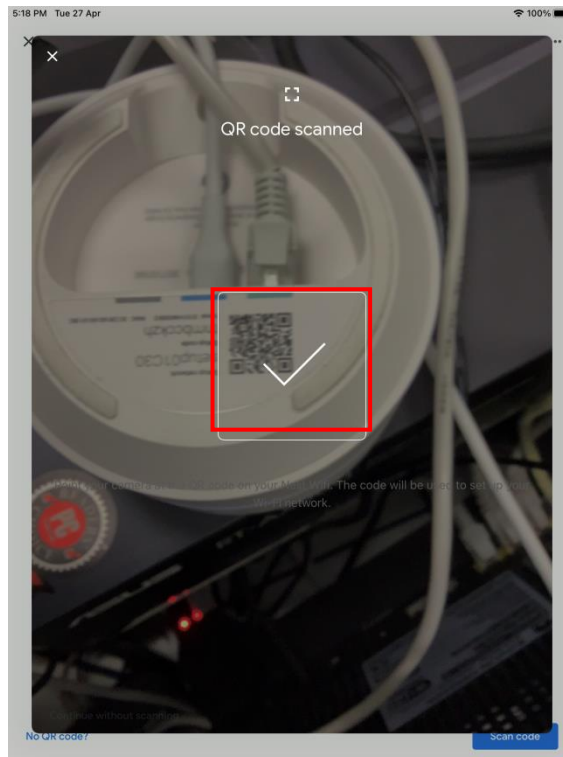
12. Waiting to search and choose the setup device which you want to setup



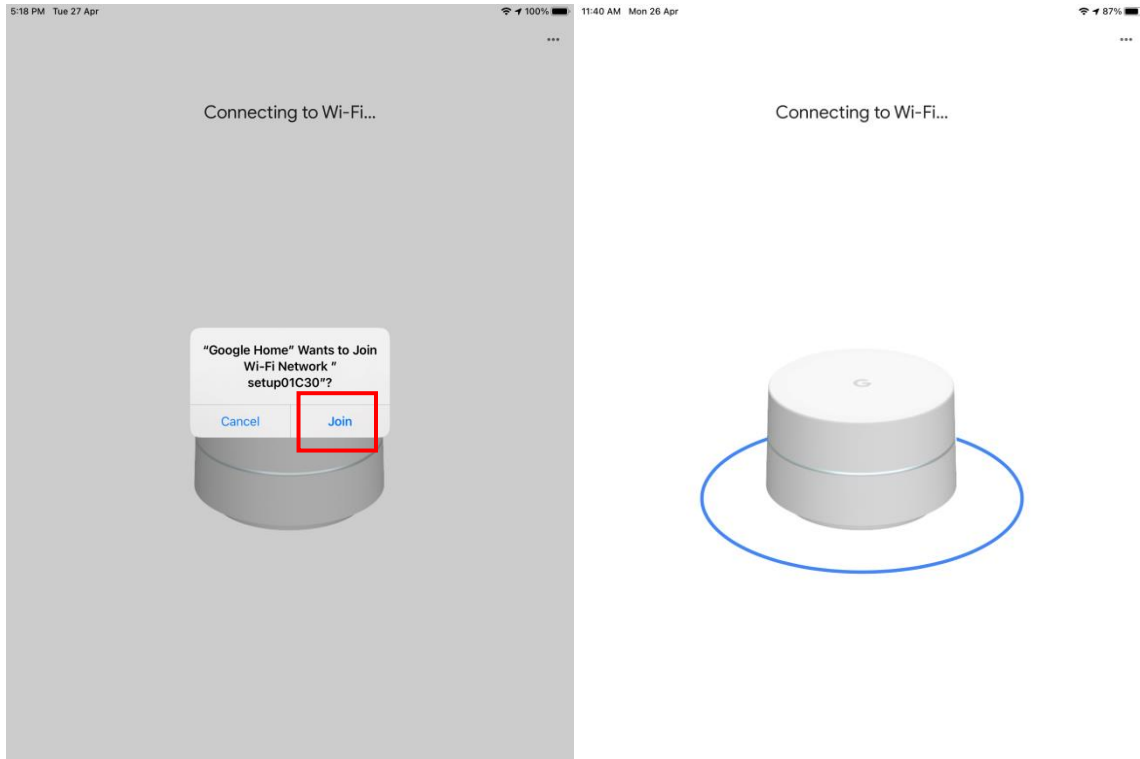
13. Click “Scan code” & “Ok” to allow access the camera



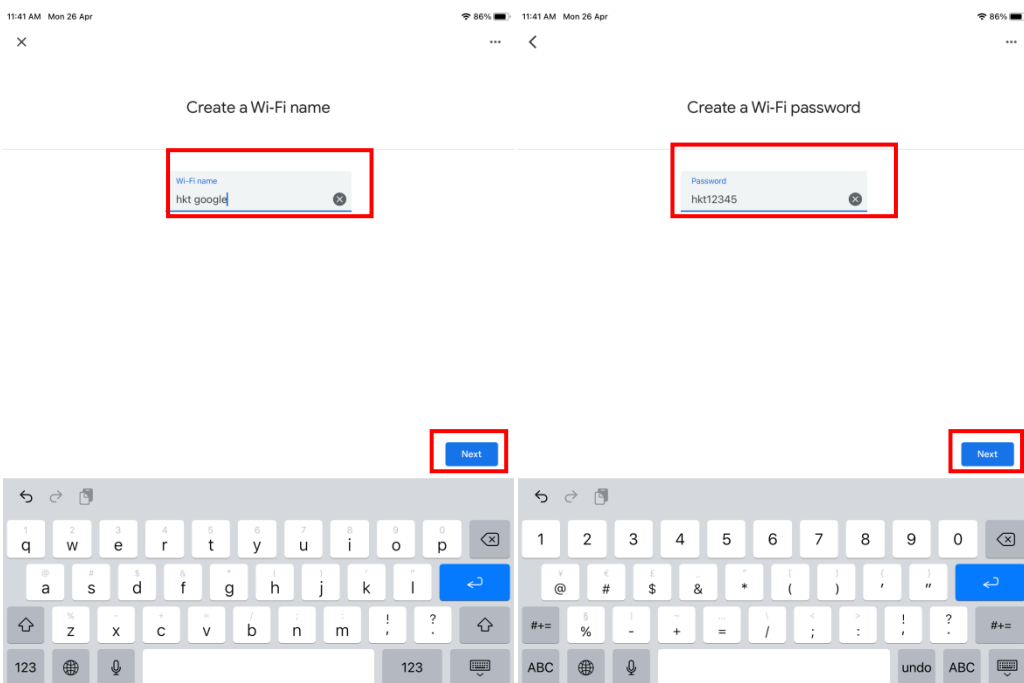
14. Scan the QR code at the bottom of the router.



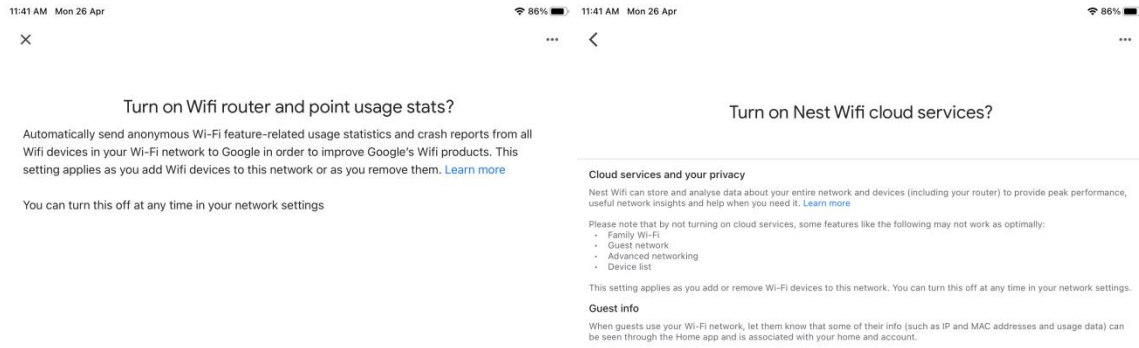
15. Click "Join" and waiting to connect the network



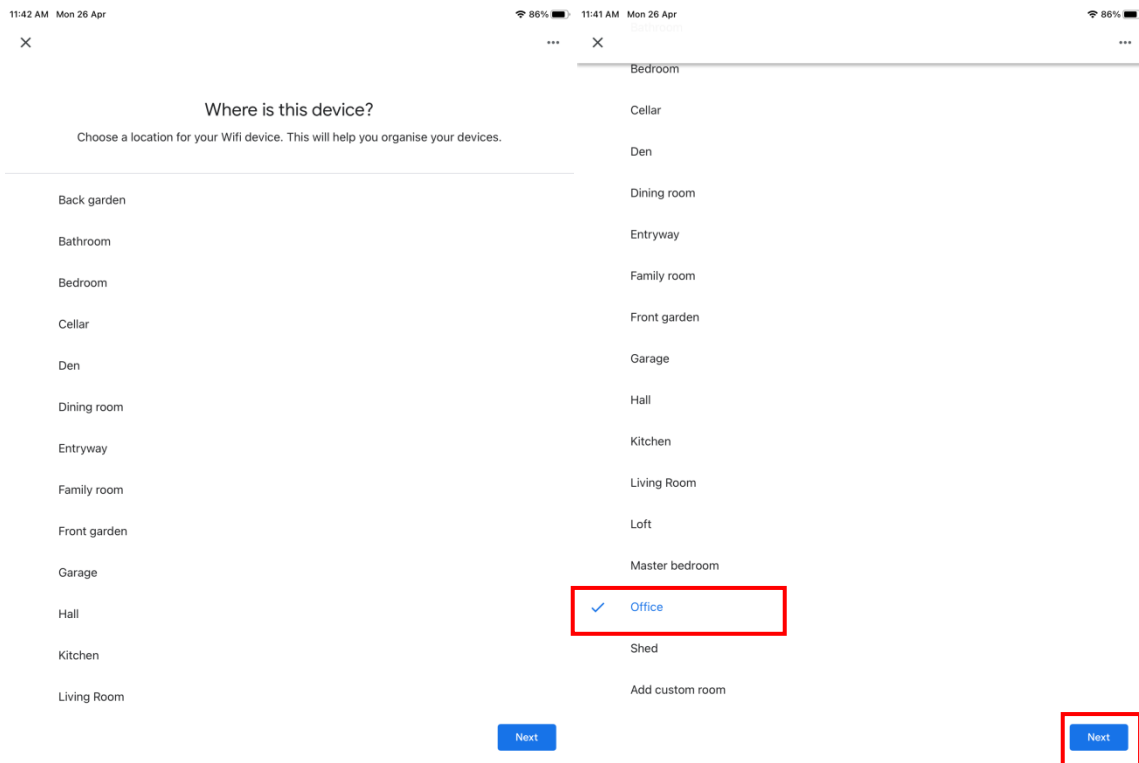
16. Input "SSID" & "Password" and click "Next"



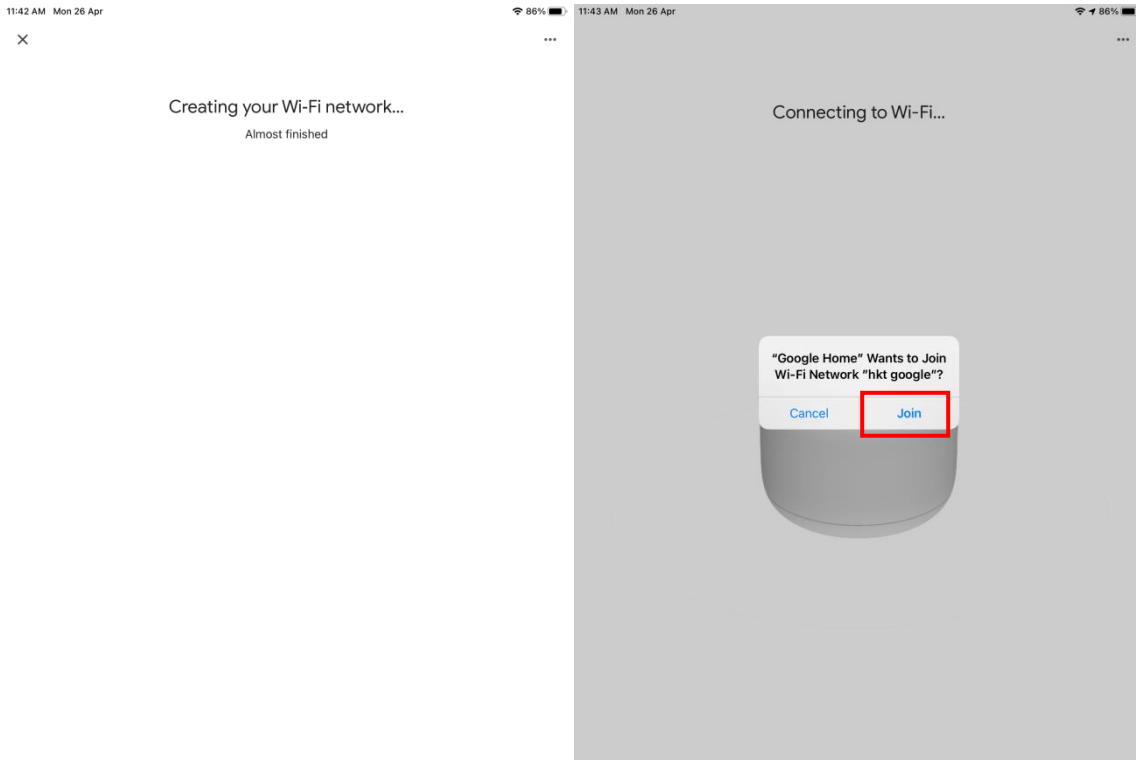
17. Click “No, Thanks” to turn off point usage status and click “Yes, I’m in” to turn on nest Wifi



18. Choose where to place the router



19. Waiting to completed the setup the 1st router and confirm join the network



20. Click Yes”



21. Place your Next Wifi point and Plug in the power then click "Next"

5:39 PM Tue 27 Apr

100% 5:39 PM Tue 27 Apr

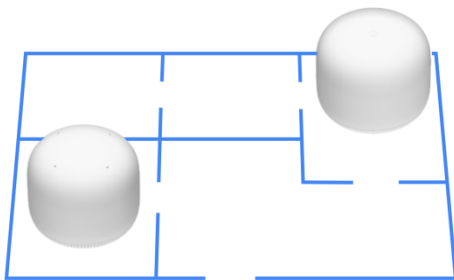
100%



Place your next Wifi point

Wifi points work best when they're no more than two rooms away from each other or the Wifi router.

To use the Assistant, put the Wifi point in a place where you can easily talk to it.



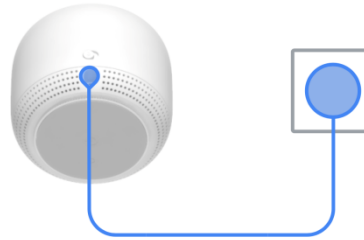
Not now



Learn more

Plug in your Wifi point

Make sure that it's plugged into a power socket. Wait around 45 seconds for the device to fully turn on.



22. Search the device then click "Next"

5:40 PM Tue 27 Apr

100% 5:40 PM Tue 27 Apr

100%



Google Wifi found

Would you like to set up this device?



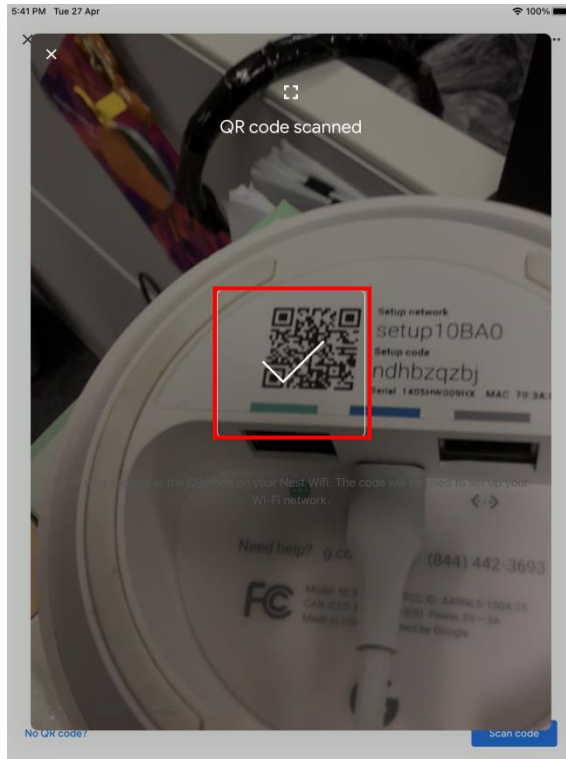
Not now



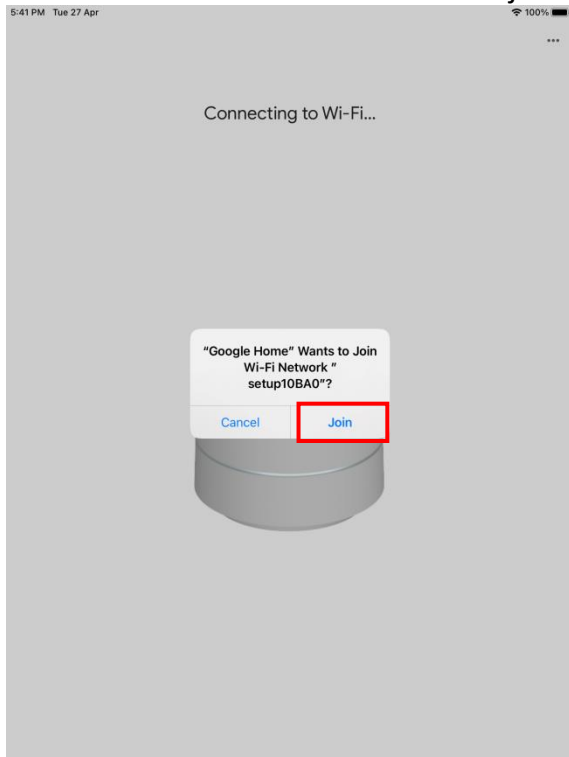
Preparing mesh...



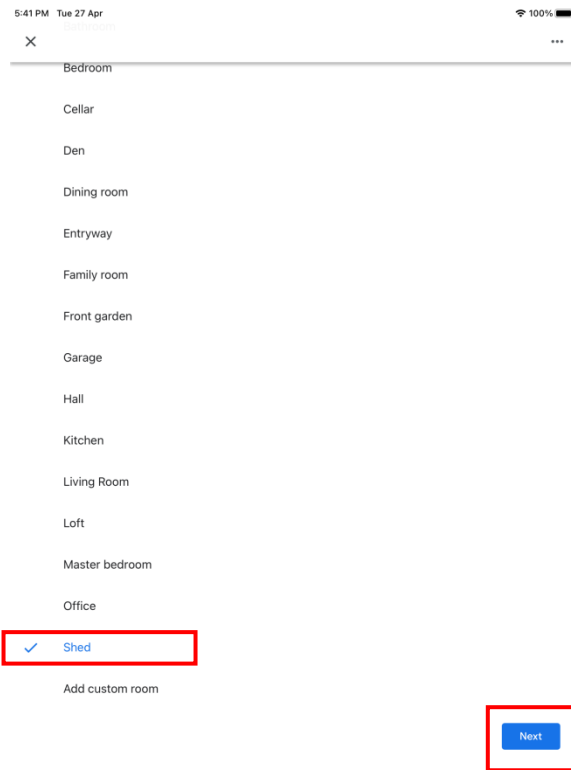
23. Scan the QR code at the bottom of the 2nd router.



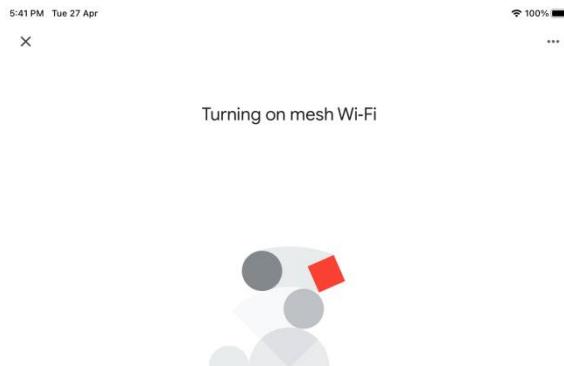
24. Click "Join" to confirm 2nd router to join the network



25. Choose where to place the 2nd router then click “Next”



26. Waiting to join the mesh network



27. If you want to add another google wifi click "Yes", otherwise click "No"

5:43 PM Tue 27 Apr

100% 

Setting up multiple devices?
It looks as though you have a three-pack



No

Yes

28. Test the Mesh connection then click "Next"

5:44 PM Tue 27 Apr

100%  5:44 PM Tue 27 Apr


100% 




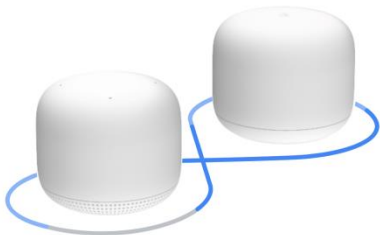
Testing mesh connection

Checking the connection between your Wifi points

Your mesh connection is great

 Google Wifi router
Copy room

 Great connection



Cancel

Next

31. After entering the home page, setup completed

